

Model: LXH-15A5-20A5

## Volumetric Water Meter

### Feature:

- Volumetric piston type
- Material body: Nylon plastic
- Size: DN15 to DN20mm, (1/2"-3/4")
- Available for cold water (50°C)
- Accuracy: Class C / R160 / R200



### Main Technical Data:

According to IS04064(GB/T778.1-1996) Standard

Size		Class	Qs	Qp	Qt	Qmin	Min Reading	Max Reading
DN(mm)	Inch		Overload Flow	Nominal Flow	Transitional Flow	Min Flow		
			m <sup>3</sup> /h		L/h		m <sup>3</sup>	
15	1/2"	C	3	1.5	22.5	15	0.0001	99999
20	3/4"	C	5	2.5	37.5	25	0.0001	99999

According to IS04064(GB/T778.1-2007) Standard

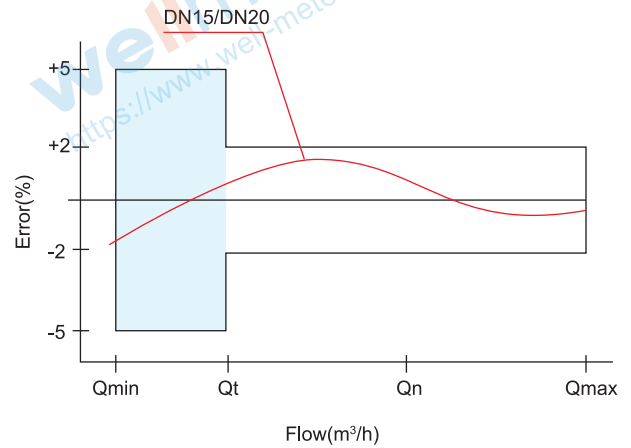
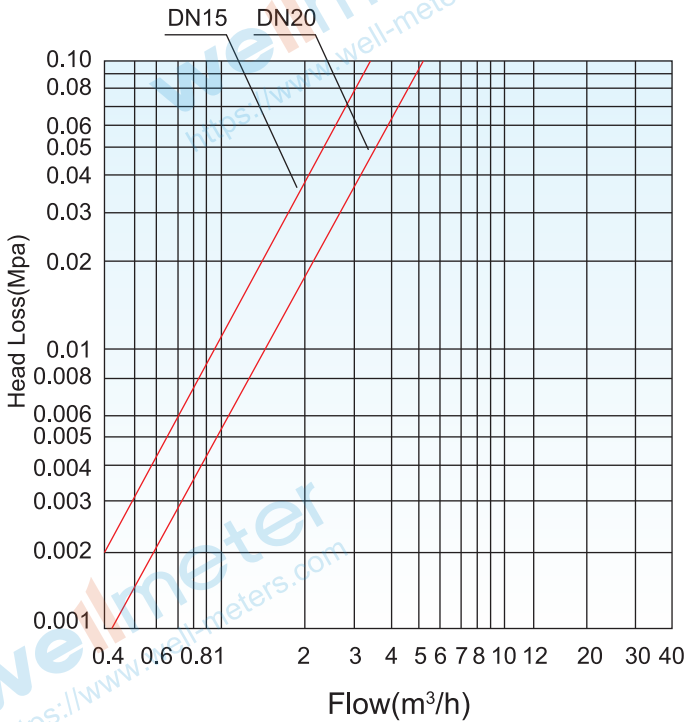
DN Size	Mm Inch	15 1/2"	20 3/4"
Q4(m <sup>3</sup> /h)		3.125	5
Q3(m <sup>3</sup> /h)		2.5	4
R160	Q2(L/h)	25	40
	Q1(L/h)	15.625	25
R200	Q2(L/h)	20	32
	Q1(L/h)	12.5	20
Min reading(m <sup>3</sup> )		0.0001	0.0001
Max reading(m <sup>3</sup> )		99999	99999
Max pressure(MAP)		16	16
Max loss(Δ P)		63	63
Max temperature		T50	T50

# Model: LXH-15A5-20A5

## INDICATING ERROR

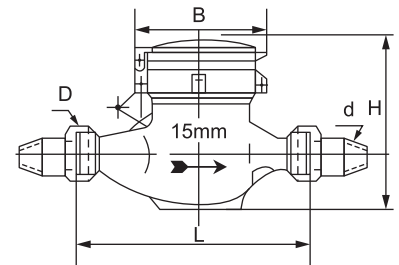
At low zone is  $\pm 5\%$  from minimum flow rate ( $q_{min}$ ) to transitional flow rate ( $q_t$ ) exclusive boundary  
 At high zone is  $\pm 2\%$  from transitional flow rate ( $q_t$ ) to overload flow rate ( $q_s$ )

## Head Loss and Error Curve:



## Dimensions and Weight:

Meter Size Dia DN	L Length	B Width	W Height	Connecting Thread D	Weight Kg
(mm)	(mm)				
15	165	95	125	G 3/4B	0.58
20	190	95	125	G 1B	0.65



## WORKING CONDITION:

Water temperature:  $\leq 50^\circ\text{C}$  for cold water meter  
 Working pressure:  $\leq 1.6\text{Mpa}$